

#	DESCRIPTION	OEM	PART #	QTY
1	ELECTRIC MOTOR	EMERSON	EMS1877	1
2	MOTOR SUPPORT	C.R.S.	22-22619	1
3	FAN 20"	AIRDEX	N-2016-4X500	1
4	LOW PRESSURE CONTROL	EMERSON	PS1-X3A	1
5	HIGH PRESSURE CONTROL	EMERSON	PS1-X5A	1
6	PRESSURE TRANSMITTER	EMERSON	PT5-18M	1
7	SOLENI. VALVE (DISCH.)	EMERSON	049609	1
8	SOLENOID COIL	EMERSON	057342	2
9	LIQUID RECEIVER	ALTEMP	48-1911	1
10	FILTER / DRYER	EMERSON	047613	1
11	CHECK VALVE 800psi	EMERSON	064986	1
12	SIGHT GLASS	SPORLAN	SA-13-S	1
13	SOLENI.VALVE (HOT GAS)	EMERSON	047546	1
14	---	---	---	---
15	COMPRESSOR	EMERSON	ZF13K4E-PRV-251	1
16	CRANKCASE HEATER	EMERSON	018-0095-00	1
17	CRANKCASE VALVE	SPORLAN	CR0T-6-0/60 5/8	1
18	RUN CAPACITOR	EMERSON	014-0064-26	1
	START CAPACITOR	EMERSON	014-0006-15	1
	POT. RELAY	EMERSON	040-0166-37	1
19	CONTROL VALVE	SPORLAN	LEC-4-180 / 903038	1

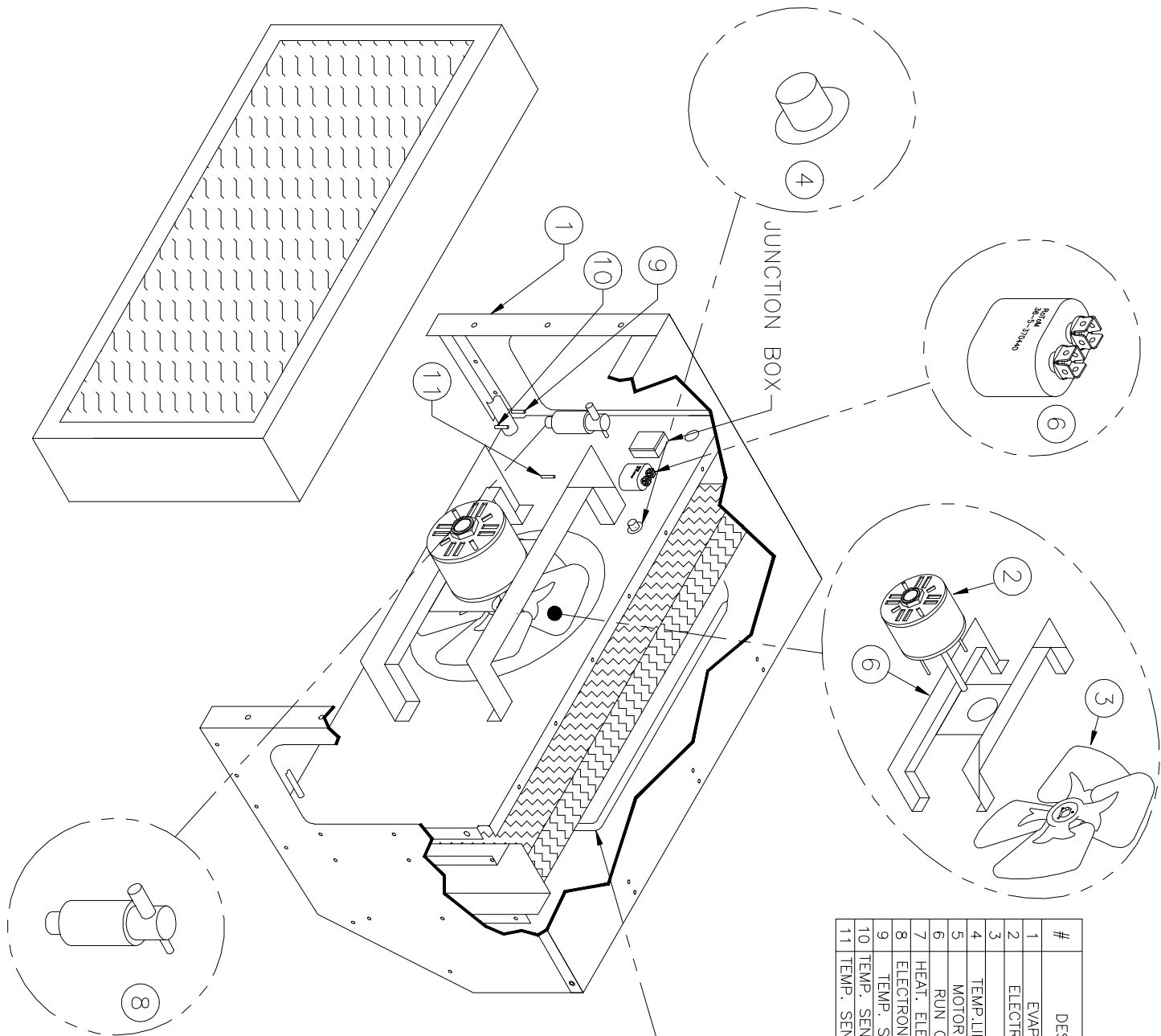
PORTICOLD

TITLE: OEM PARTS LIST
CONDENSER SBC15-1

DATE: 19/01/03 SCALE: NTS PAGE: 1/8

REFRIGERANT 404A

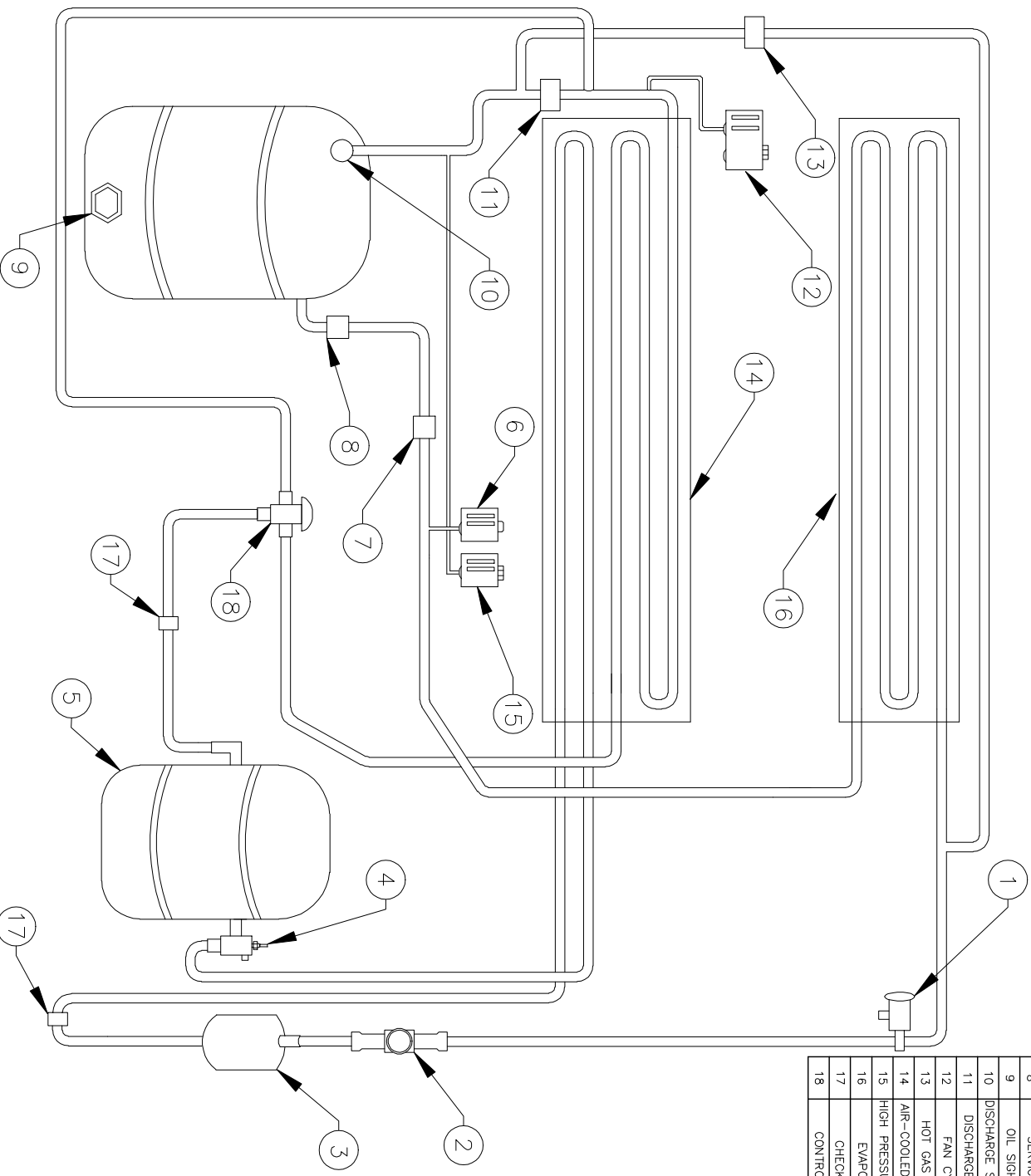
#	DESCRIPTION	QTY.	OEM	PART NUMBER
1	EVAPORATOR	1	C.R.S.	50SBC15-1W
2	ELECTRIC MOTOR	1	EMERSON	EMS1877
3	FAN	1	AIRDEX	2820895
4	TEMP LIMIT SWITCH	1	ALTEMP	LS2-120-2
5	MOTOR SUPPORT	1	C.R.S.	22-22619
6	RUN CAPACITOR	1	ALTEMP	36-7.5J370
7	HEAT. ELEMENT 3000W	1	VOLTON	0.260" dia x 96"
8	ELECTRONIC EXP. VALVE	1	EMERSON	EX4-LV1
9	TEMP. SENSOR XED	1	EMERSON	804497
10	TEMP. SENSOR DEFROST	1	EMERSON	501-7071
11	TEMP. SENSOR AMBIANT	1	EMERSON	501-7071



SBC15-1 UNIT
208-230/1/60

PORTICOLD

TITLE:	OEM PARTS LIST		
DRAWN BY:	F.L.	VER. BY:	C.M.
DATE:	19/01/19	SCALE:	NTS
		PAGE:	2/8



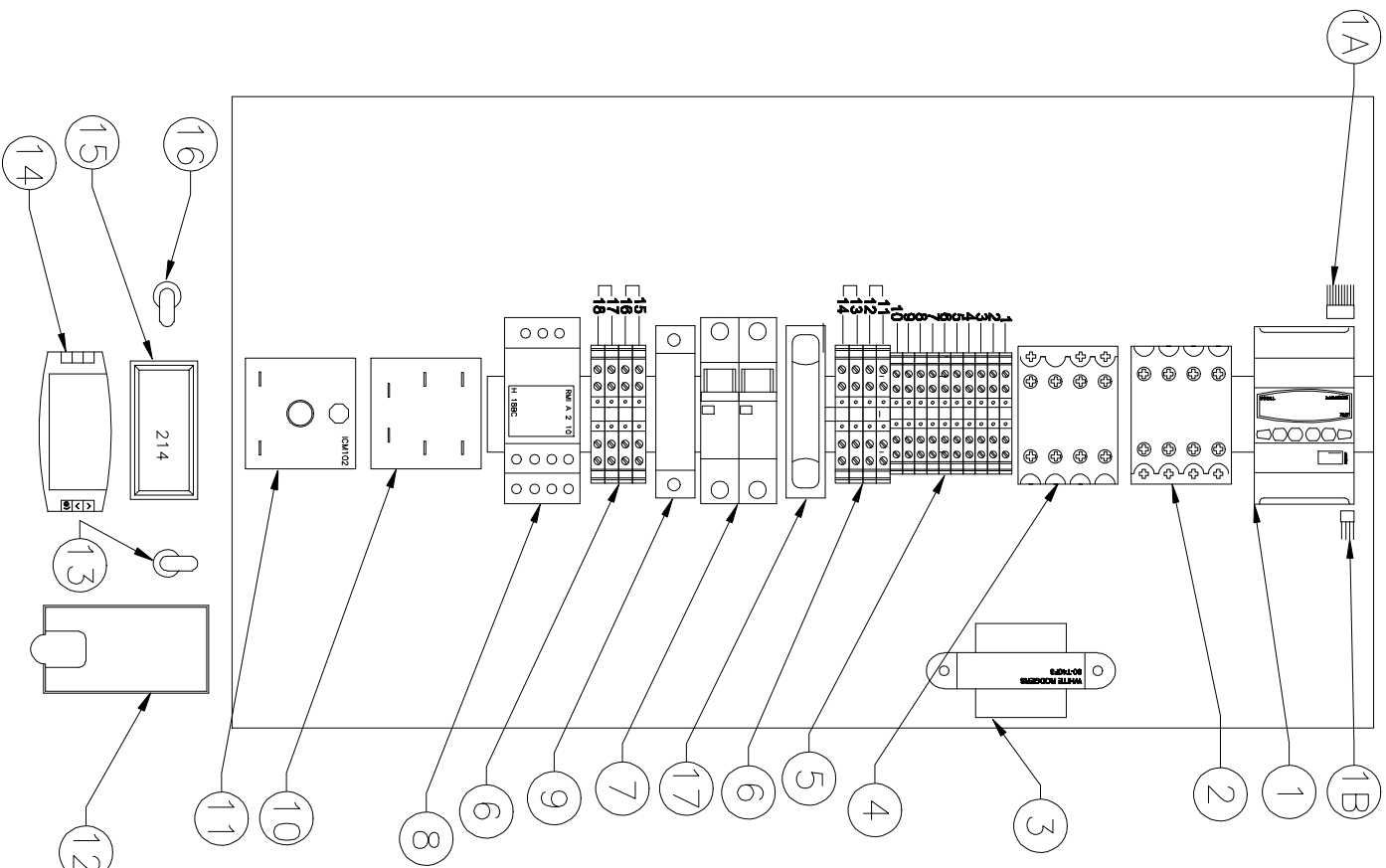
#	DESCRIPTION	OEM	PART #	QTY
1	ELECTRIC EXP. VALVE	EMERSON	EX4-LV1	1
2	SIGHT GLASS	SPORLAN	SA-13S 3/8 OD	1
3	FILTER/DRIER	EMERSON	047613	1
4	MAN. LIQUID LINE VALVE	ALTEMP	(LIQUID RECEIVER)	1
5	LIQUID RECEIVER	ALTEMP	48-1911	1
6	LOW PRESSURE CONTROL	EMERSON	PS1-X3A	1
7	CRANKCASE VALVE	SPORLAN	CR07-6-0/60 5/8	1
8	SERVICE PORT	COPELAND	(COMPRESSOR)	1
9	OIL SIGHT GLASS	SPORLAN	SA-13-S	1
10	DISCHARGE SERVICE PORT	COPELAND	(COMPRESSOR)	1
11	DISCHARGE SOLENOID	EMERSON	063339	1
12	FAN CYCLING	EMERSON	PS1-X5A	1
13	HOT GAS SOLENOID	EMERSON	049609	1
14	AIR-COOLED CONDENSER	C.R.S.	60SBC15-1	1
15	HIGH PRESSURE CONTROL	EMERSON	PS1-X5A	1
16	EVAPORATOR	C.R.S.	50SBC15-1	1
17	CHECK VALVE	EMERSON	064986	2
18	CONTROL VALVE	SPORLAN	LEC-4-180 / 903038	1

PORTICOLD

TITLE: REFRIGERATION CIRCUIT
SBC15-1

DRAWN BY: F.L. VER. BY: C.M. NUM: 80SBC15016W
DATE: 19/01/03 SCALE: NTS PAGE: 3/8

#	OEM	DESCRIPTIONS	PART #	QTY
1	EMERSON	EXD-SH1 SUPERHEAT CONTROL	920000	1
1A	EMERSON	CONTROLER PLUG	807865	1
1B	EMERSON	EXD CABLE	804805	1
2	TECHSPAN	COMPRES. CONTACTOR	TCI-D3201-U7	1
*3	EMERSON	24V TRANSFORMER	90-140F3	1
4	TECHSPAN	HEATER CONTACTOR	TCI-D1801-U7	1
5	TECHSPAN	TERMINAL STRIP	CTS2.5U-N	10
6	TECHSPAN	TERMINAL STRIP	CMC2-2	8
7	FUSETEK	CIRCUIT BREAKER	JTECUL2C08	1
8	CARLO GAVAZZI	RMI RELAY 10A	RMA2-10230AC	1
9	FUSETEK	CIRCUIT BREAKER(N/U)	LPSC001	1
10	HONEYWELL	RELAY	R4222D1021	1
11	ICM CONTROLS	FAN TIME DELAY	24-ICM102	1
12	SCHNEIDER	30A. BREAKER	Q00230	1
13	DEL CITY	DPST SWITCH	730013	1
14	WEISS INSTRUMENTS	DIXELL CONTROLLER	XR70CX	1
15	NEWARK	VOLTAGE METER	DMS-20PC-1LMBC	1
16	DEL CITY	SPST SWITCH	73020	1
17	GUILLEVIN	SPARE FUSE HOLDER	BM603150	1



LEFT : RIGHT

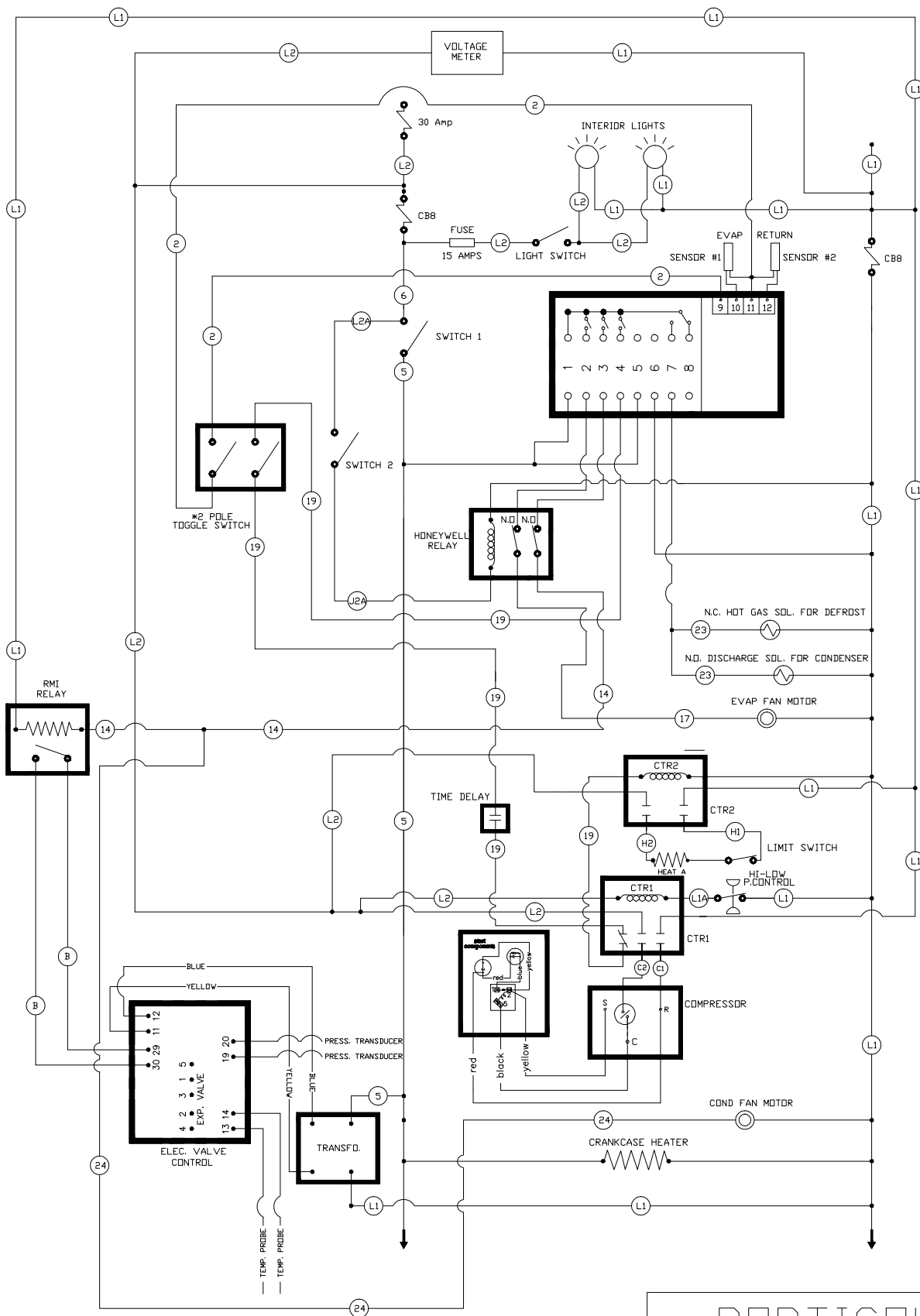
LEFT : RIGHT

- 1 - S (black) : S (white)
- 2 - G (brown) : G (brown)
- 3 - A (orange) : A (orange)
- 4 -
- 5 - 23 (black) : 23 (purple)
- 6 - 17 (black) : 17 (brown)
- 7 - 14 (black) : 14 (blue)
- 8 - L1A (black) : L1A (orange)
- 9 - L2A (black) : L2A (pink)
- 10 - L2A (black) : L2A (blue)
- 11 - 5 (black) : -
- 12 - 5 (black) : L2 (black)
- 13 - L1 (red) : L1 (red)
- 14 - L1 (black) : L1 (yellow)
- 15 - L1 (black) : L1 (red)
- 16 - L1 (black) : L1 (red)
- 17 - L1 (red) : L2 (red)
- 18 - L1 (black) : L1 (black)
- 19 - L1 (red) : L1 (white)

PORTICOLD

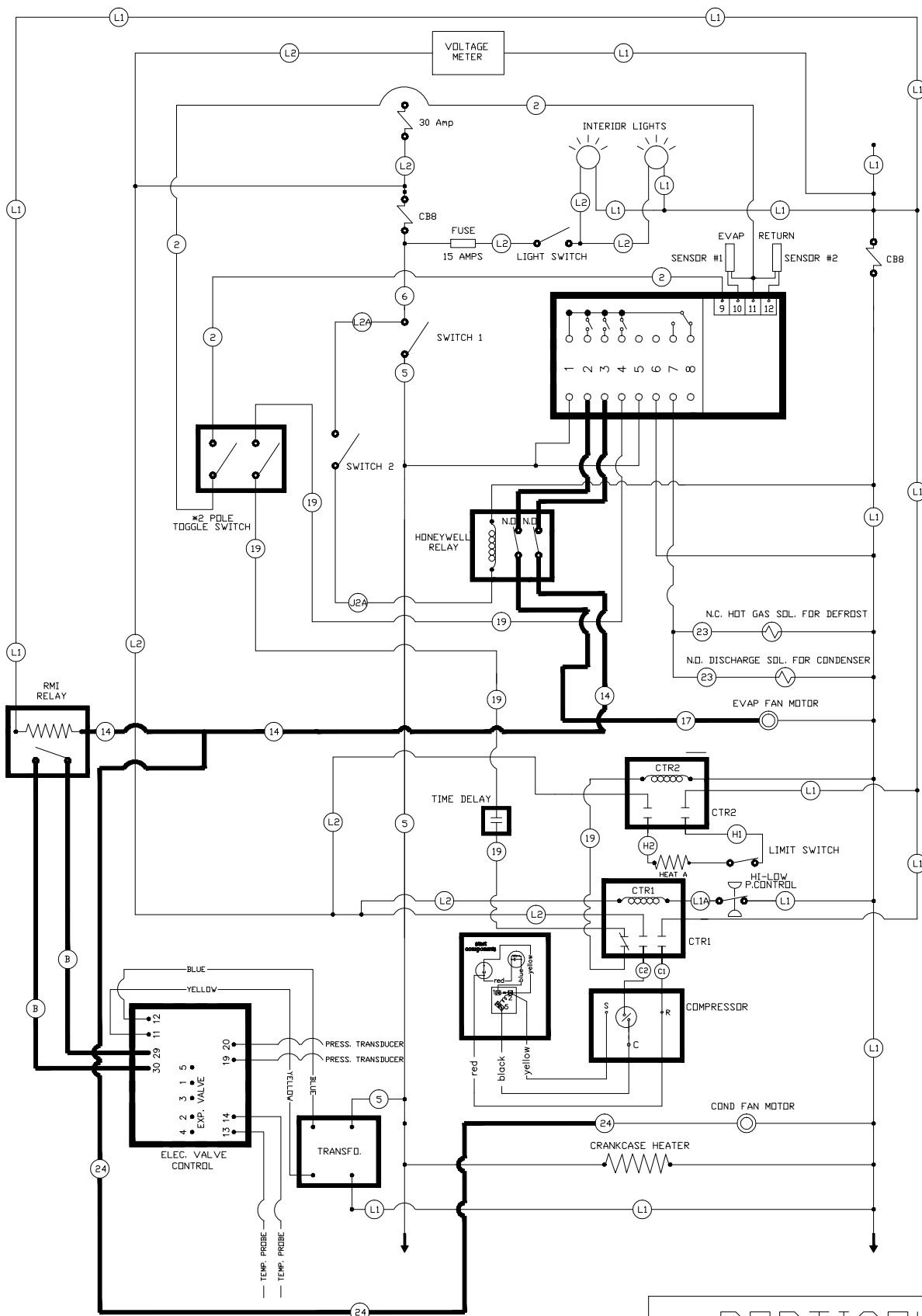
TITLE: OEM PARTS LIST
ELECT.BOX SBC15-1

DRAWN BY: F.L. VER. BY: C.M. NUM: 37SBC15016W
DATE: 19/01/19 SCALE: NTS PAGE: 4/8



*TOGGLE SWITCH - ON :
 OFF: FREEZER
 CTR1 : COMPRESSOR CONTACTOR
 CTR2 : HEATER CONTACTOR

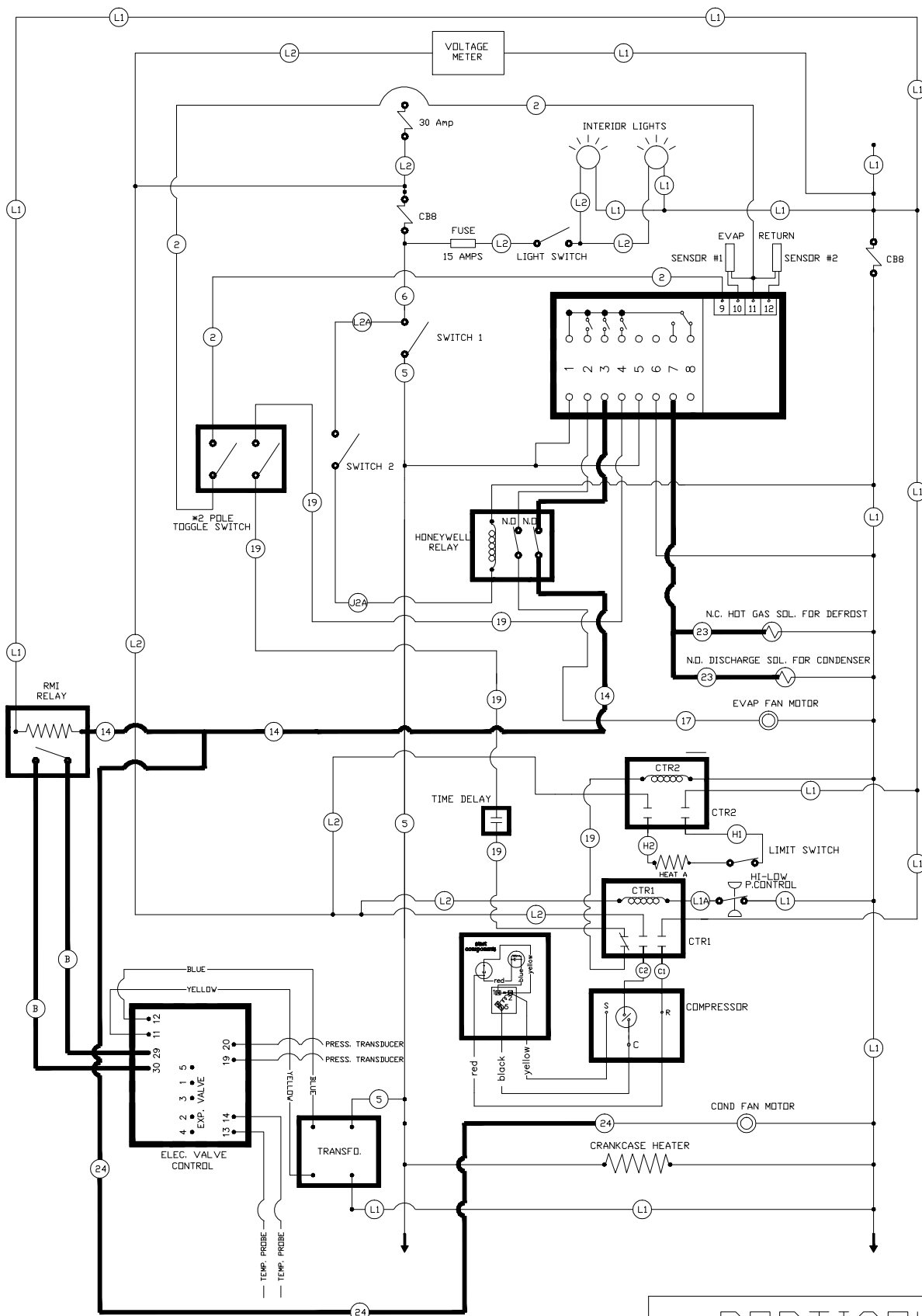
<h1>PORTICOLD</h1>		
TITLE: CONTROL DIAGRAM SBC15-1		
DRAWN BY: F.L.	VER. BY: ---	NUM: 35SBC15016W
DATE: 19/01/19	SCALE: NTS	PAGE: 5/8



*TOGGLE SWITCH - ON :
 OFF: FREEZER

CTR1 : COMPRESSOR CONTACTOR
 CTR2 : HEATER CONTACTOR

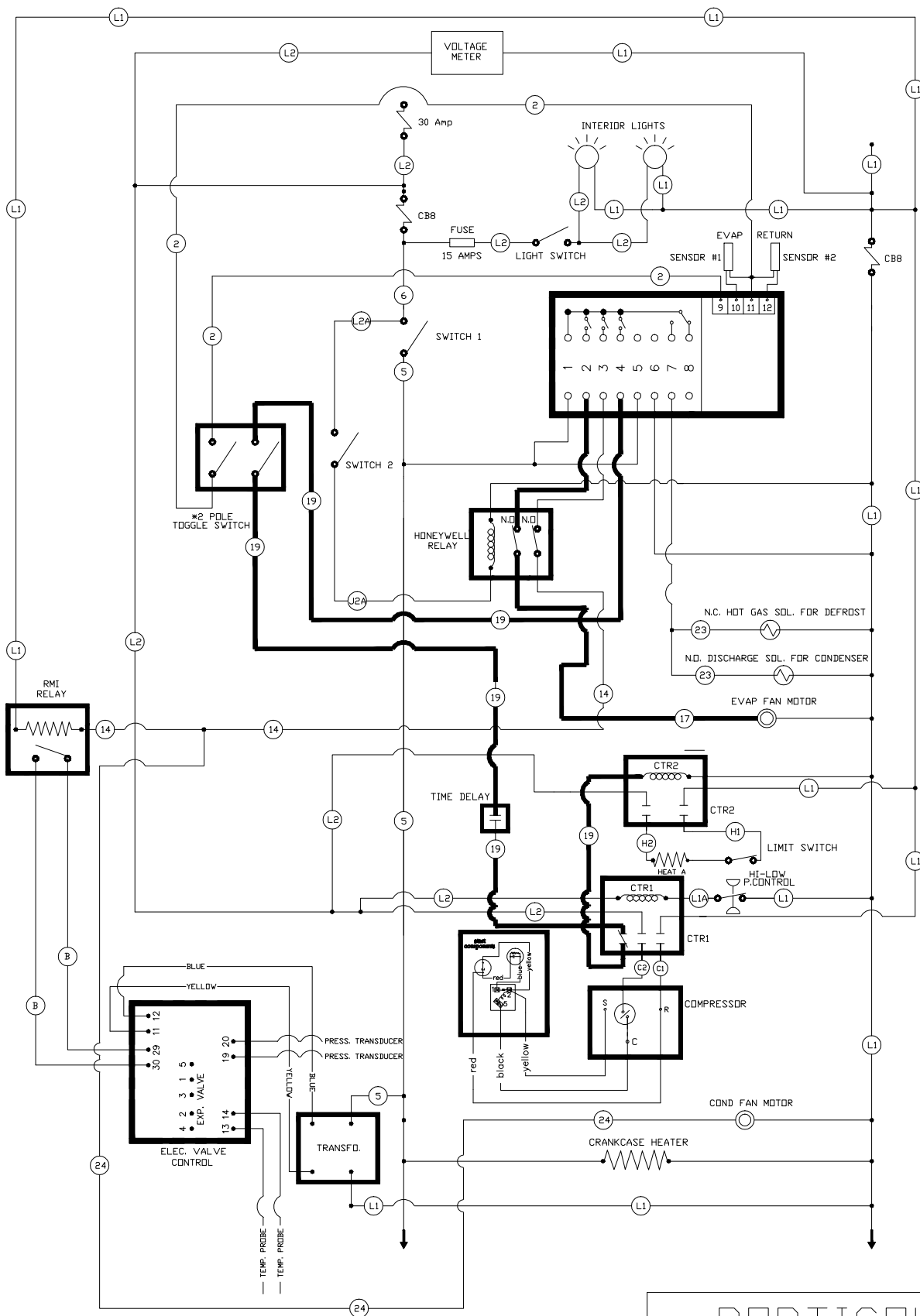
<h1>PORTICOLD</h1>		
TITLE: COOLING DIAGRAM SBC15-1		
DRAWN BY: F.L.	VER. BY: ---	NUM: 35SBC15016W
DATE: 19/01/19	SCALE: NTS	PAGE: 6/8



*TOGGLE SWITCH - ON :
OFF: FREEZER

CTR1 : COMPRESSOR CONTACTOR
CTR2 : HEATER CONTACTOR

<h1>PORTICOLD</h1>		
TITLE: DEFROST DIAGRAM		NUM: 35SBC15016W
DRAWN BY: F.L.	VER. BY: ---	PAGE: 7/8
DATE: 19/01/19	SCALE: NTS	



*TOGGLE SWITCH - ON :
 OFF: FREEZER

CTR1 : COMPRESSOR CONTACTOR
 CTR2 : HEATER CONTACTOR

<h1>PORTICOLD</h1>		
TITLE:		HEAT DIAGRAM SBC15-1
DRAWN BY:	F.L.	VER. BY: --- NUM: 35SBC15016W
DATE:	19/01/19	SCALE: NTS PAGE: 8/8